

NetScene

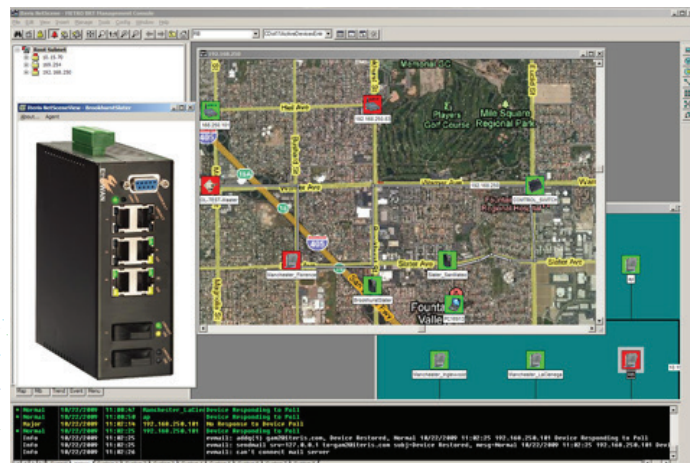
24/7 ITS equipment diagnostic tool



Iteris' NetScene is network management software that benefits the design, implementation and operation of communication networks. NetScene brings telephony-type network management capabilities to smart transportation systems. NetScene provides operators with the ability to visually monitor and proactively manage today's ITS networks.

NetScene is a secure, distributed network management system that monitors an entire ITS infrastructure, verifying the availability and performance levels of critical ITS components. Operations personnel are immediately alerted to malfunctions, resulting in increased network uptime and equipment availability.

NetScene not only manages the availability of ITS devices, but also provides a central configuration management system to modify device configuration parameters and tools to monitor the performance and available bandwidth on the network. With these tools, malfunctioning devices are identified before impacting large segments of the network, so they can be remotely removed from the network until a technician is dispatched to fix the device. Should a device fail, the system will automatically notify operations and maintenance personnel through e-mail or SMS text messaging alerts.



NetScene

24/7 ITS equipment diagnostic tool

Features and Benefits

- **Secure** - Safely manage devices with SNMP V3 authentication and encryption. Tailor views and capabilities to each management user.
- **Scalable** - Use distributed polling and server components for workgroup, large Intranet or Management Service Provider configurations.
- **Connected** - Catch problems quickly with e-mail event notifications. Forward events to helpdesk or domain management systems.
- **Accessible** - Monitor and manage the network from remote locations with the SNMPc Windows Client and JAVA web consoles.
- **Proactive** - Monitor LAN/WAN performance and service availability with scheduled web reports to effectively plan upgrades and reduce wasted bandwidth.
- **Integrated** - Automatically export map topology, trend statistics and event log entries to industry standard databases.
- **Multi-Vendor** - View and modify standard and private information on routers, switches, servers and other devices from any vendor.
- **Customizable** - Simplify tasks with custom expressions, data tables and menus. Develop graphical device views with the BitView scripting tool and a variety of programming and scripting interfaces.

Feature Specifications

SNMP Protocols	V1, V2c, V3 with SHA/MD5 Authentication and AES/DES Encryption
Communication	NetScene Enterprise supports both IPV6 and IPV4 networks
Device Discovery	Automatically discovers and polls SNMP and ICMP (Ping) devices
Service Discovery	Performs service discovery on each device, including SNMP, ICMP, Telnet, FTP, HTTP, SMTP and four user-specified TCP ports
Topology Layout	Multiple level hierarchies. Segmented by polling agent. Tree, Ring or Snaked Bus networks
Event Notification:	Ignore, ignore duplicates, forward, e-mail, page, Display Alarm Box or execute application
Reporting	Graph, bar chart, distribution and summary; Printed and web export
Backup	Live/Standby server support with automated failover
External Interfaces	ODBC and Text Export; Event forwarding using SNMP traps
Customization	Private MIB Import. Custom tables, expressions and menus; Execute applications from map double-click, on event reception and during custom polling
Programming Interfaces	Proprietary object-oriented interface for C/C++ applications. SNMPc 4.0 DDE Interface WinSNMP de-facto standard interface; Utilities for scripting language support

Product Options

Enterprise Edition	Base system for a scalable multi-user environment; Enterprise Edition includes the SNMPc Server license, unlimited JAVA Console support, ten Remote Console licenses, and ten Remote Poller licenses
Remote Access Extension	License-only option for the Enterprise Edition; This option allows an unlimited number of Remote Console users and Remote Polling agents
Workgroup Edition	Single user version for managing small to medium sized networks; all components run on a single system and support one user; map database size is limited to 1,000 objects; Workgroup Edition does not include advanced reporting functions
Online Module	Online web based is license-only option for the Enterprise Edition; option allows web based access to Trend Report data, exported to an SQL database and viewed from a web browser by the separate NetScene Online Module

Requirements

CPU	Intel 2 GHz
Memory	8 GB
Disk	100 GB
Windows Operating System	8, 2012, 7, 2008R2, Vista sp1, 2003 sp2, XP sp3



Copyright © 2016 Iteris, Inc. All rights reserved.

NOTICE: Iteris, Inc. reserves the right to change product specifications without notice. Information furnished is for informational purposes only. This information may not be complete or the latest revision. For the most up-to-date information, please contact Iteris, Inc.

